

Semiautomatic Floor Maps Editor with Automatic Beacons Net Generator

Authors: Ondrej Čerman Samuel Pecár
Matúš Demko Gabriel Takács
Juraj Marák Miroslav Takács

Supervisor: Dr. Alena Kovárová

Indoor navigation is nice idea, isn't it?

... but how can it be done?

1 You need a map

Most building has AutoCAD project files. They are used to generate map, but it is very time consuming.

We created a tool for semiautomatic map transformation from AutoCAD DXF to SVG.

2 You need hardware

User location can be calculated from e.g. signal strength of bluetooth low-energy beacons deployed inside a building.

Location is calculated by trilateration or other sophisticated method implemented by our colleagues.

3 Beacon placement

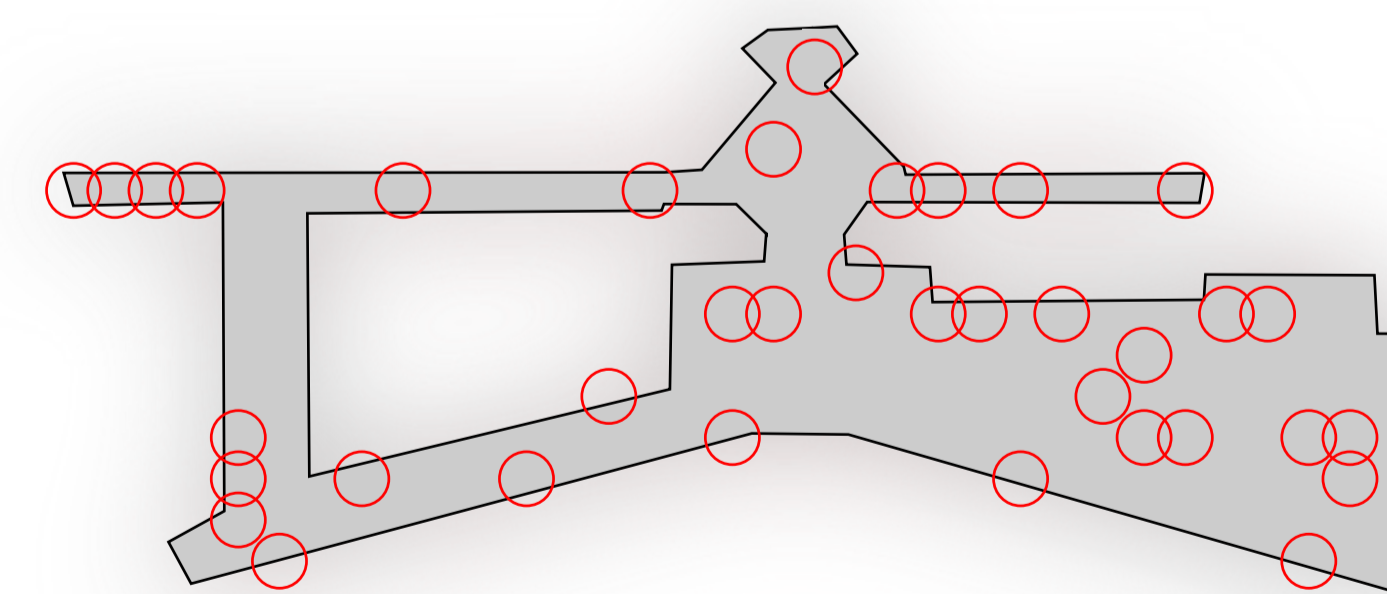
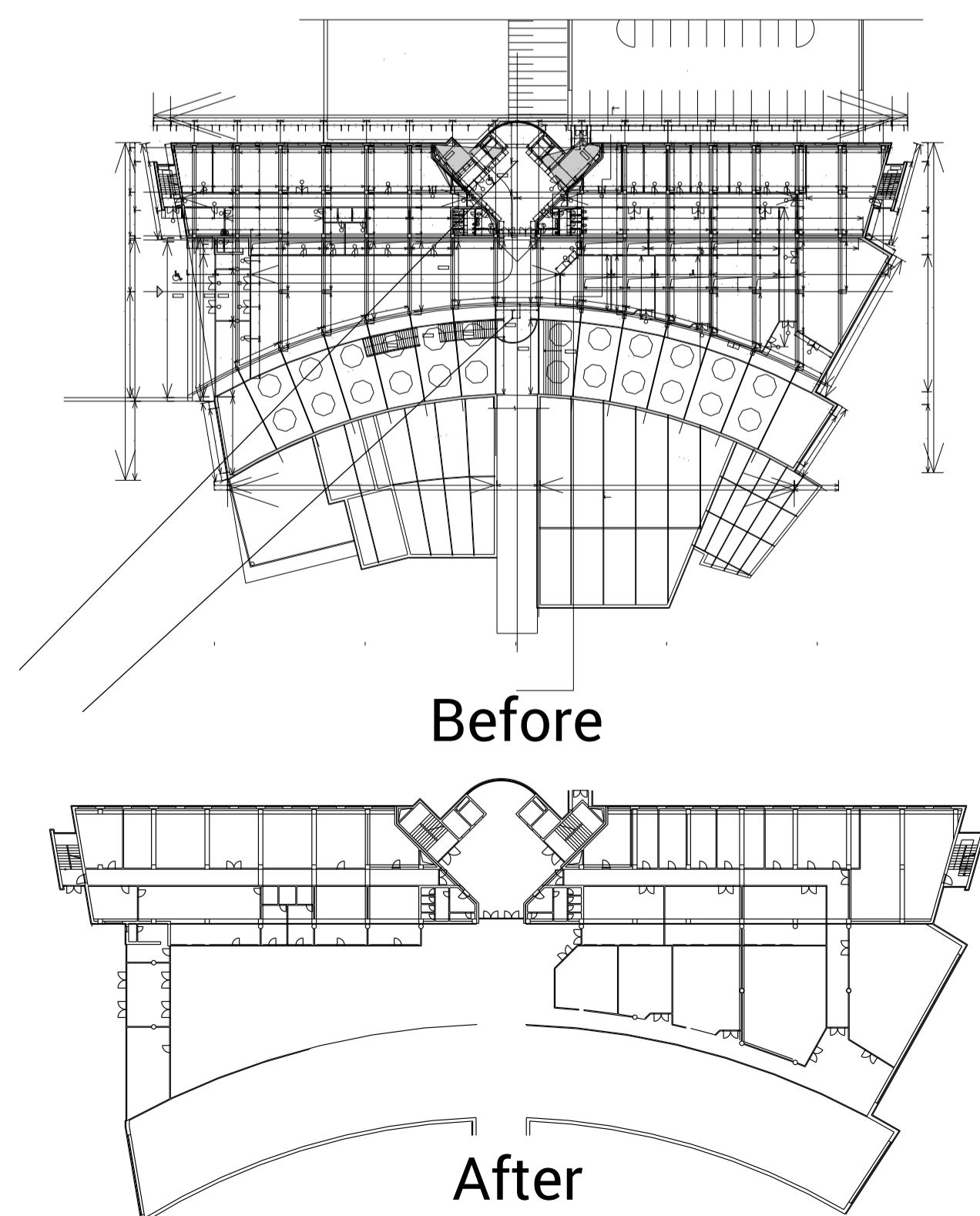
You need to maximize the cover with minimum number of beacons

Our software will compute beacon locations to minimize initial costs

4 You need an app

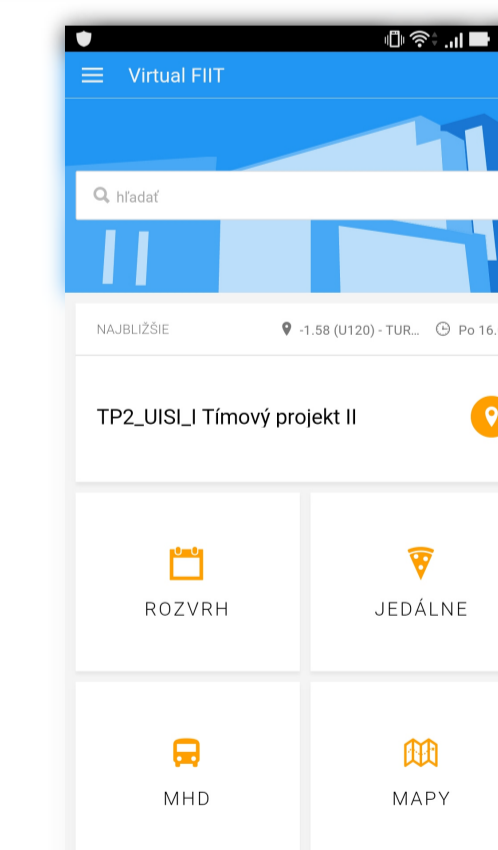
App will do all the magic: displays the map, calculate the position, shows navigation instructions or anything you want

Our solutions will help to create app prototypes such as VirtualFIIT for other buildings



○ 37 calculated beacon locations

■ Area for indoor navigation



VirtualFIIT

